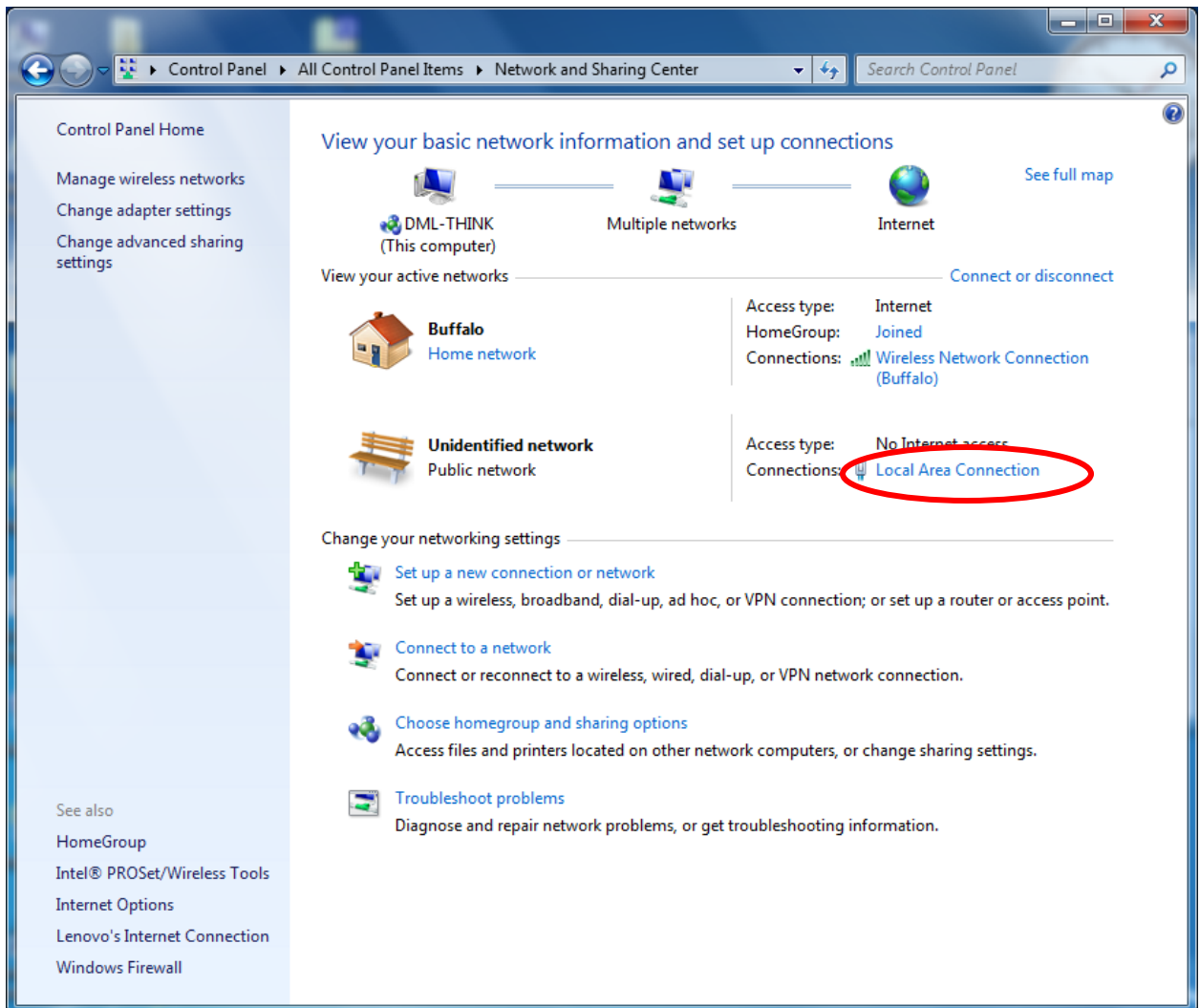
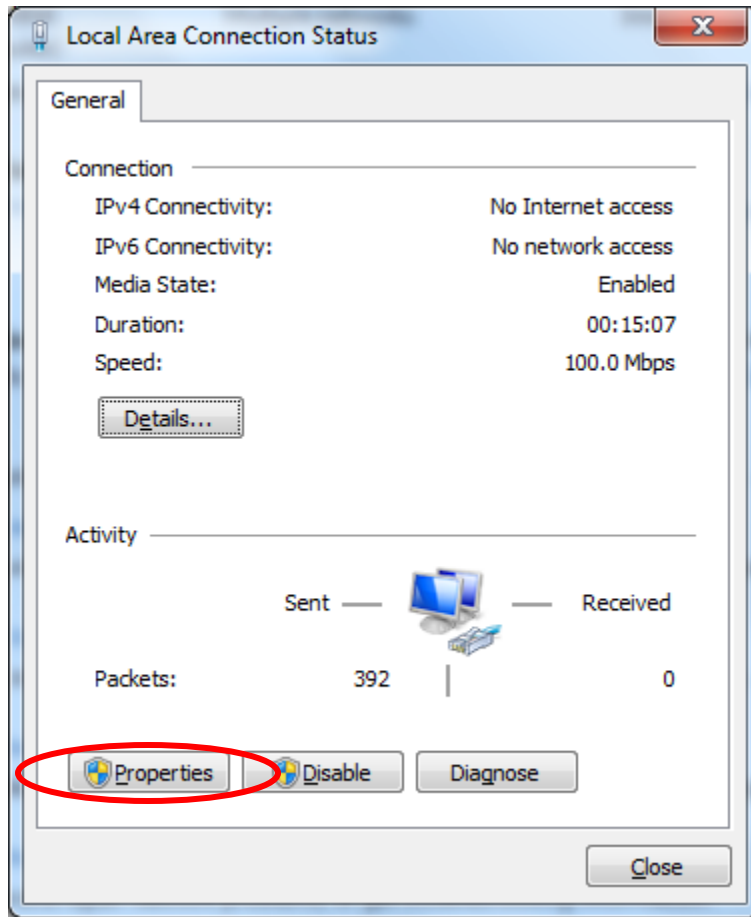


HLSE03P Dual Port Serial to Ethernet server Quick Installation guide for Windows 7 32-bit

1. Install FabulaTech 15-day trial.
2. Connect the HLSE03P to the power supply and also connect it to your computer with a standard crossover patch cable.
3. Open Network and Sharing Center:

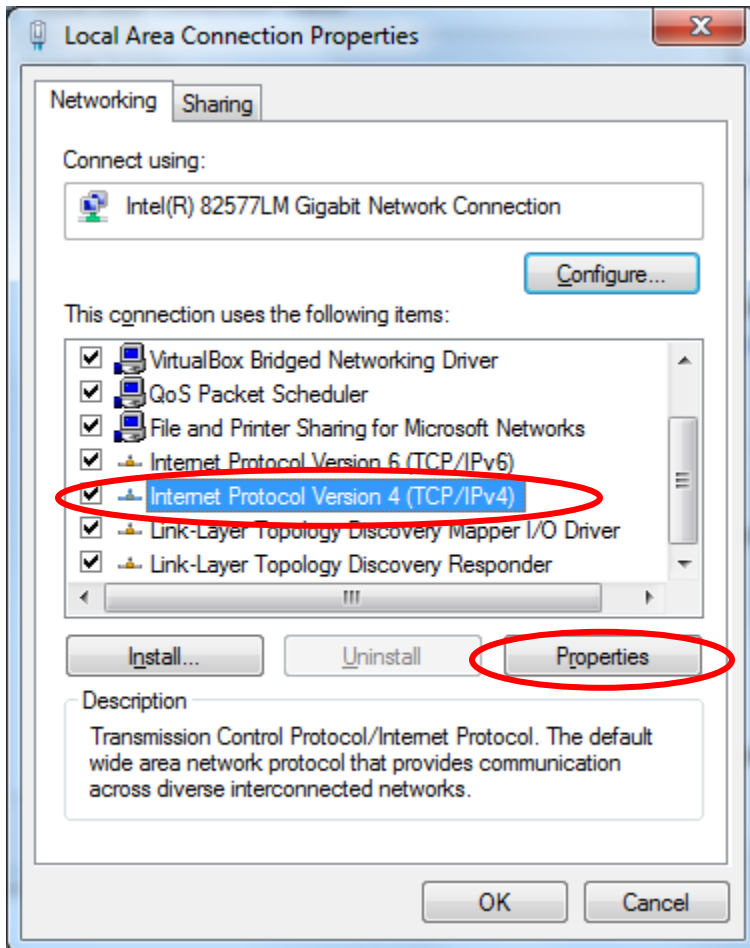


4. Click Local Area Connection

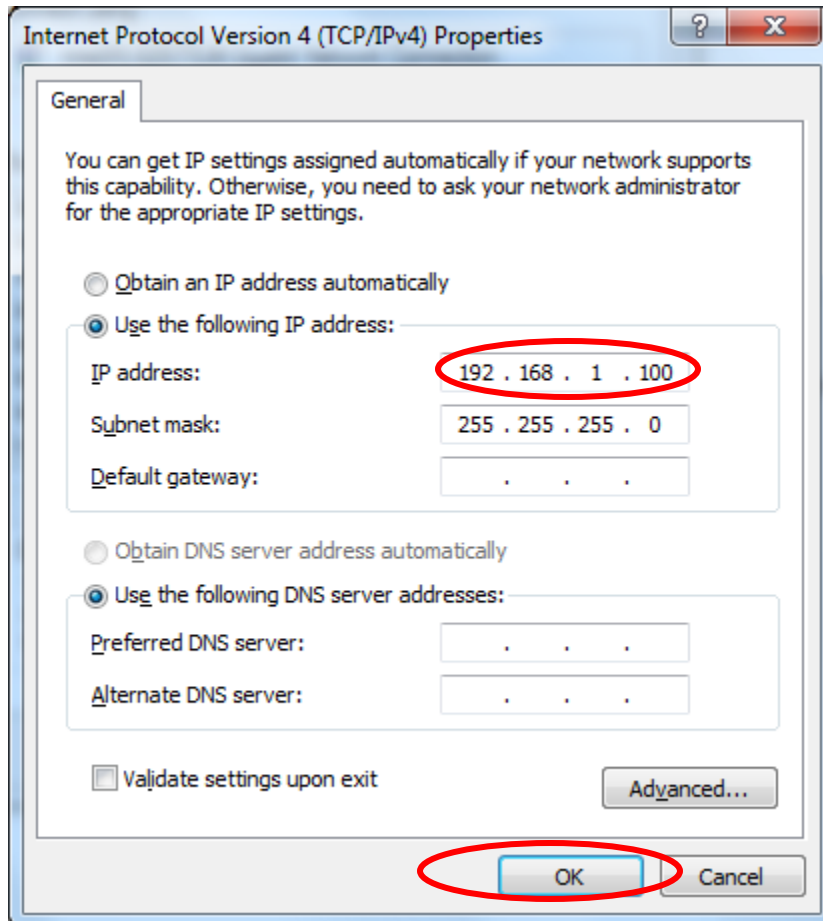


5. Click Properties

6. Highlight Internet Protocol Version 4 (TCP/IPv4) and click Properties:

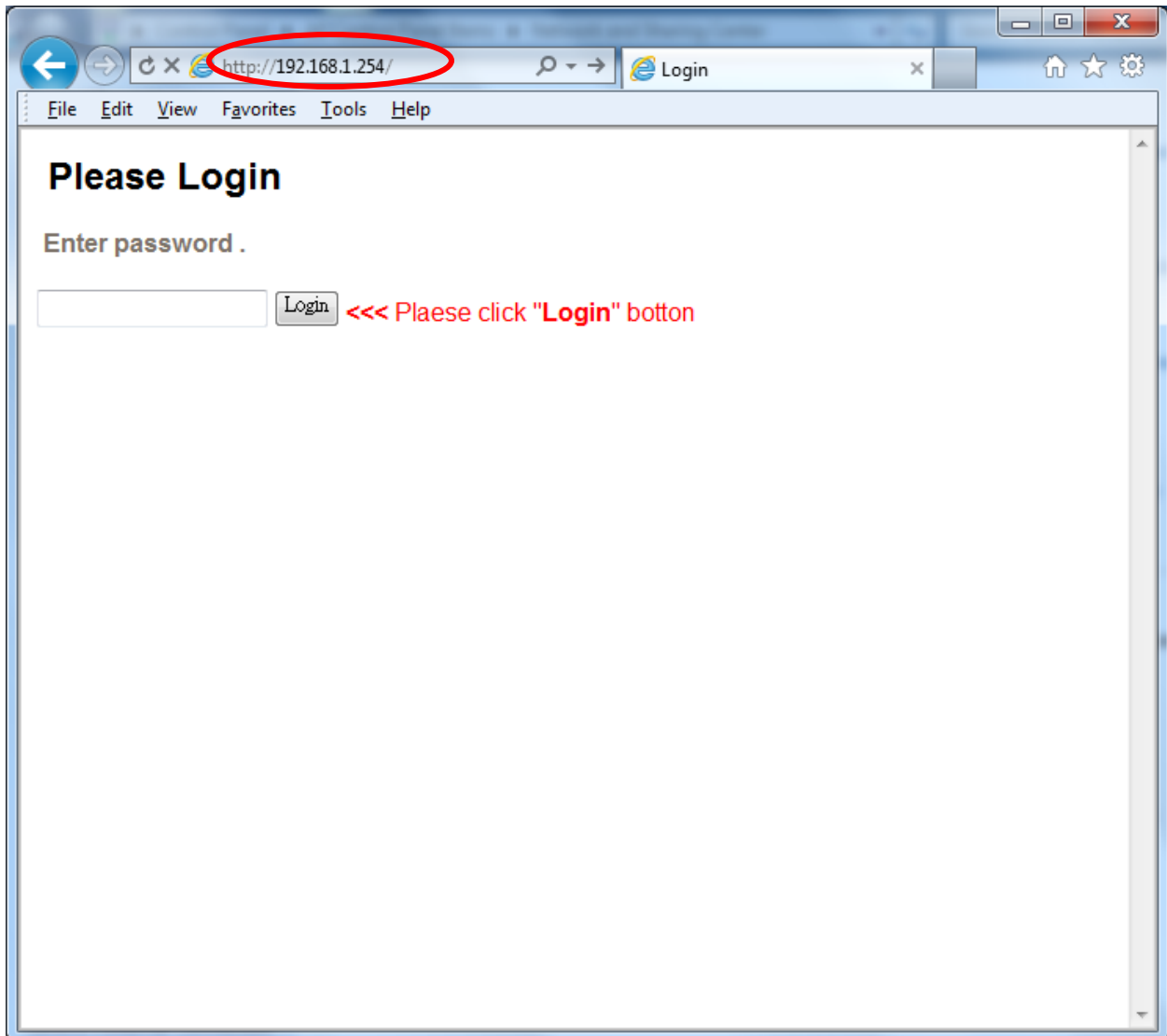


- Assign an IP address from 192.168.1.1 to 192.16.1.253 to your computer, in this example we use 192.168.1.100



- Click the OK button and close the Local Area Connection window and Local Area Connection Status window.

9. Open a web-browser and enter the address of the HLSE03P in the address bar



10. Login to the HLSE03P with the password which is 123456

Serial To Ethernet Converter

Home

Port 0 Settings

Port 1 Settings

System Settings

Name: **S2E**

IP Address: 192.168.1.254

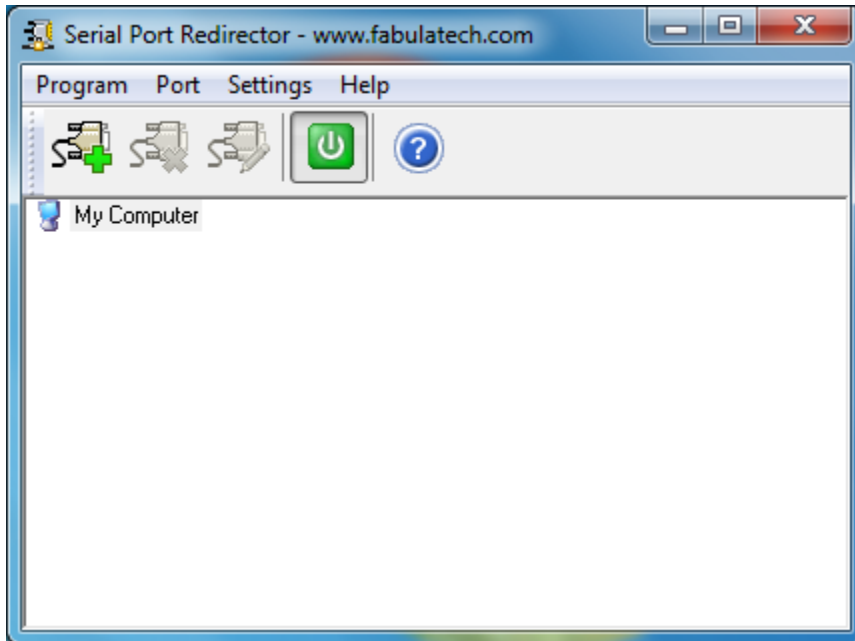
MAC Address: 00-1a-ff-01-02-27

Current port settings:

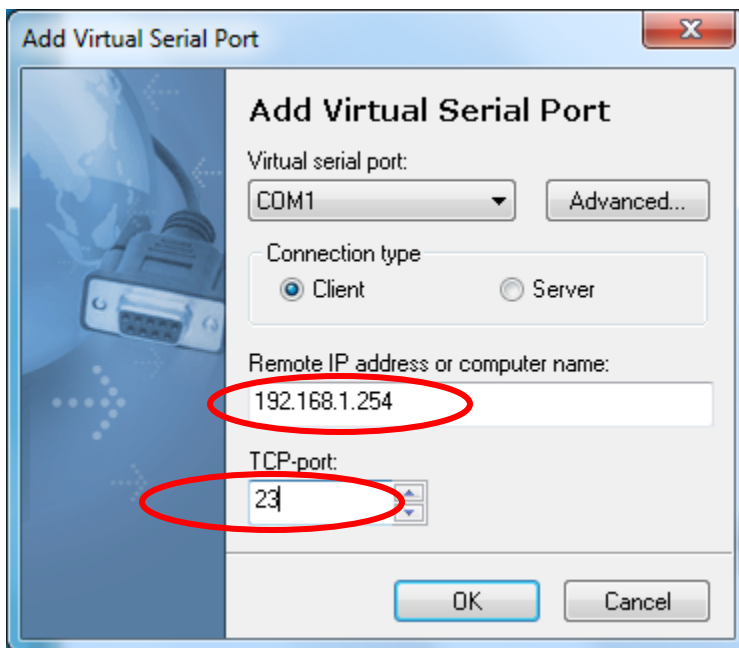
	Port 0	Port 1
Baud Rate:	115200 bits/second	115200 bits/second
Data Size:	8 bits/character	8 bits/character
Parity:	None	None
Stop Bits:	1 bit(s)	1 bit(s)
Flow Control:	None	None
Local Telnet Port Number:	23	26
Remote Telnet Port Number:	N/A	N/A
Telnet Mode:	Server	Server
Telnet Protocol:	Telnet	Telnet
Telnet Server IP:	N/A	N/A
Telnet Timeout:	0 seconds	0 seconds

Create a Virtual COM Port

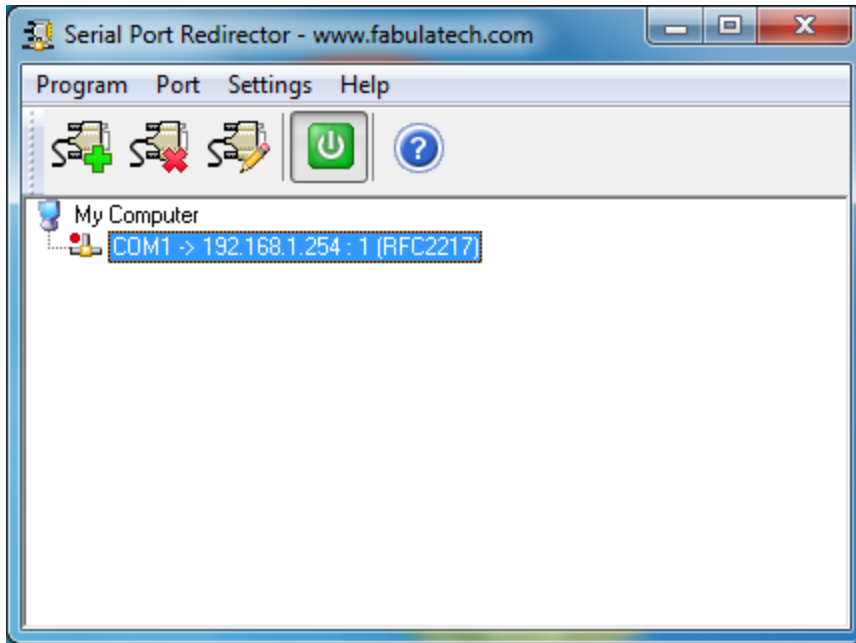
1. Open FabulaTech



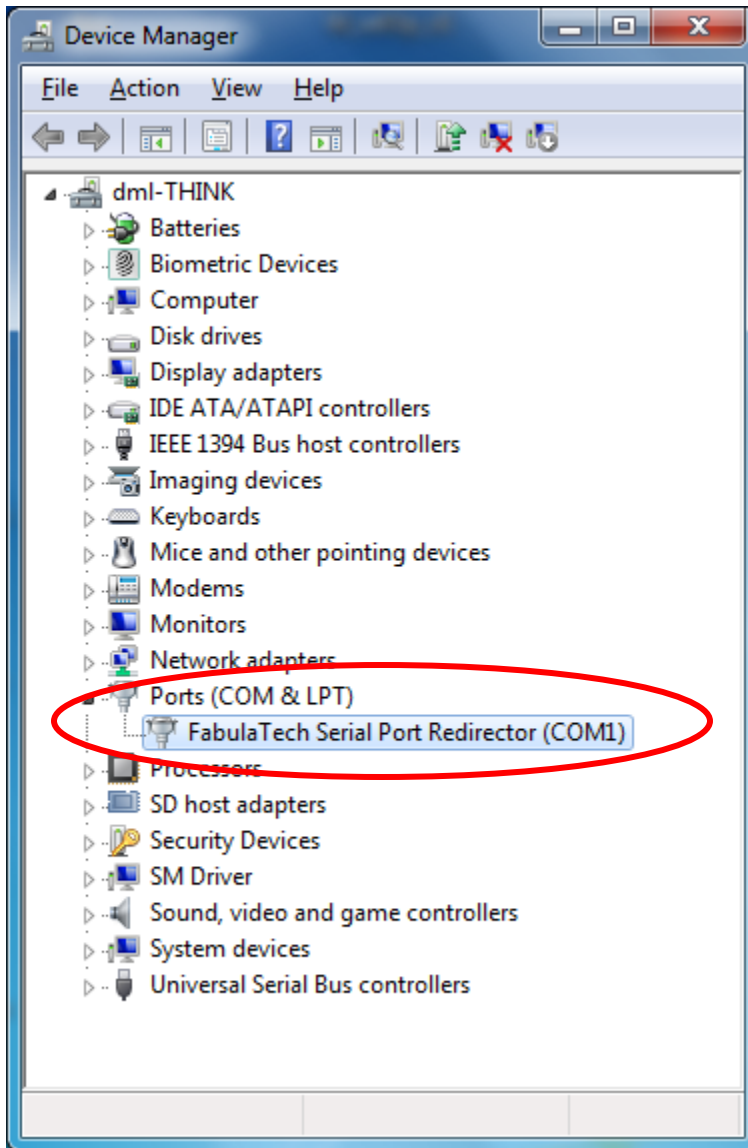
2. Click Port -> Add. The software should find the HLSE03P automatically, however you need to change the TCP port to port 23:



3. Click the OK button, and the virtual COM port will be created.



4. If the virtual COM port has been successfully created you should be able to see it in Device Manager under Ports (COM<P):

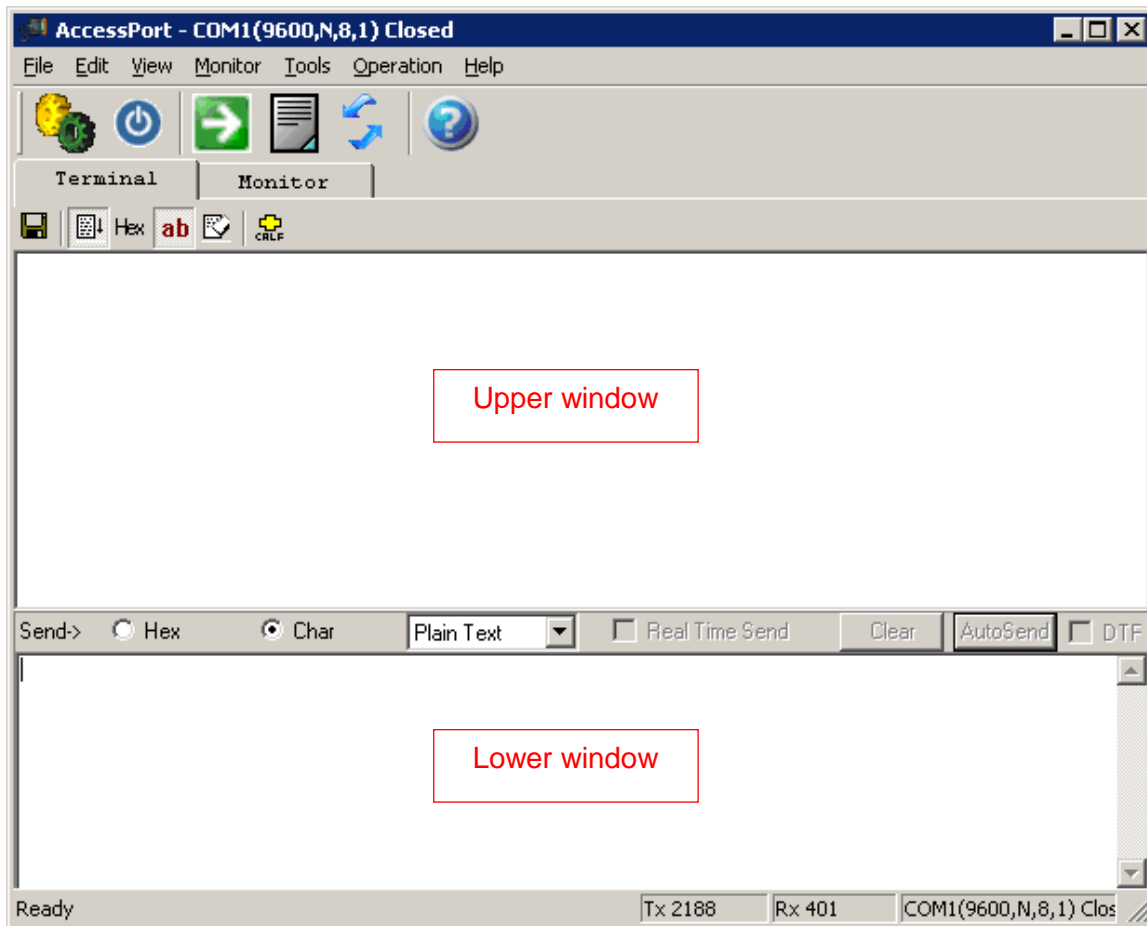


The trial version of Fabulatech will allow you to create only one virtual COM port.

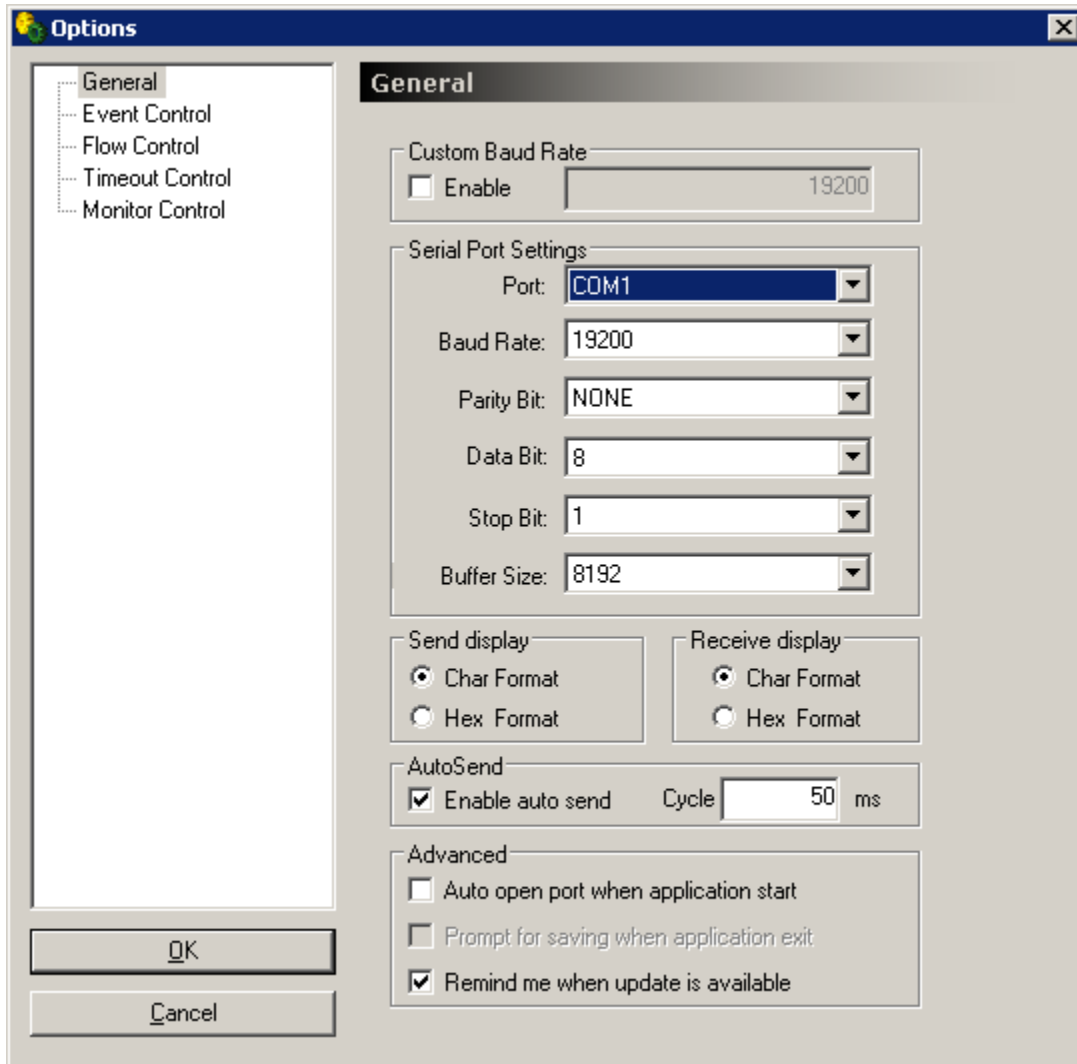
Making a loop-back test to verify operation

To test if the HLSE03P is working correctly and the drivers and cabling has been successfully setup you can make a loop-back test. This will verify if you can send and receive data both ways, from LAN to serial and serial to LAN.

Download and start AccessPort from www.Nordfield.com. When you start AccessPort for the first time you will be welcomed with the window shown below. The upper window is the 'receive' window where you receive data, and the lower window is the 'send' window where you can enter a text string to send.

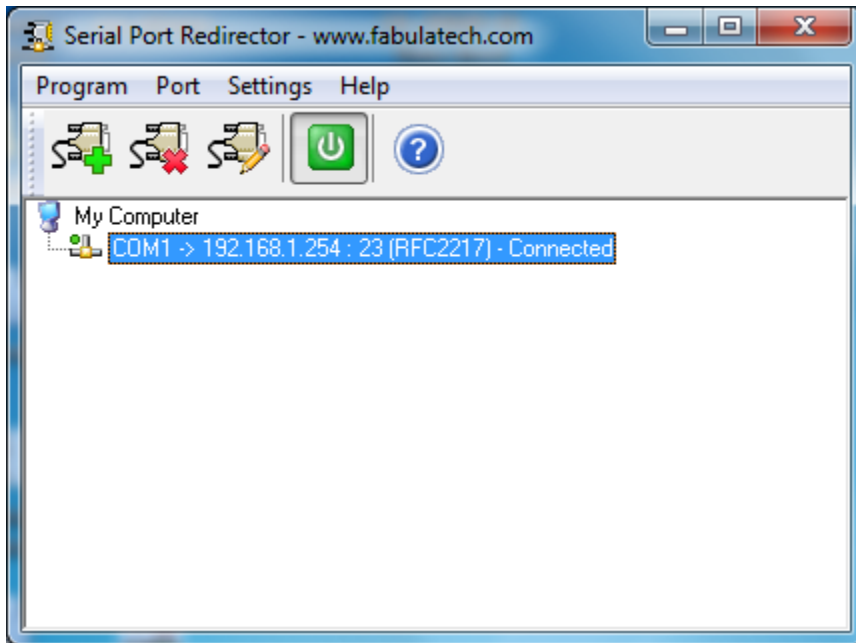


Click Tools -> Configuration in the menu bar, this will open the configuration window. Enter the correct information. In this case we have created COM port 1 so we select COM 1:

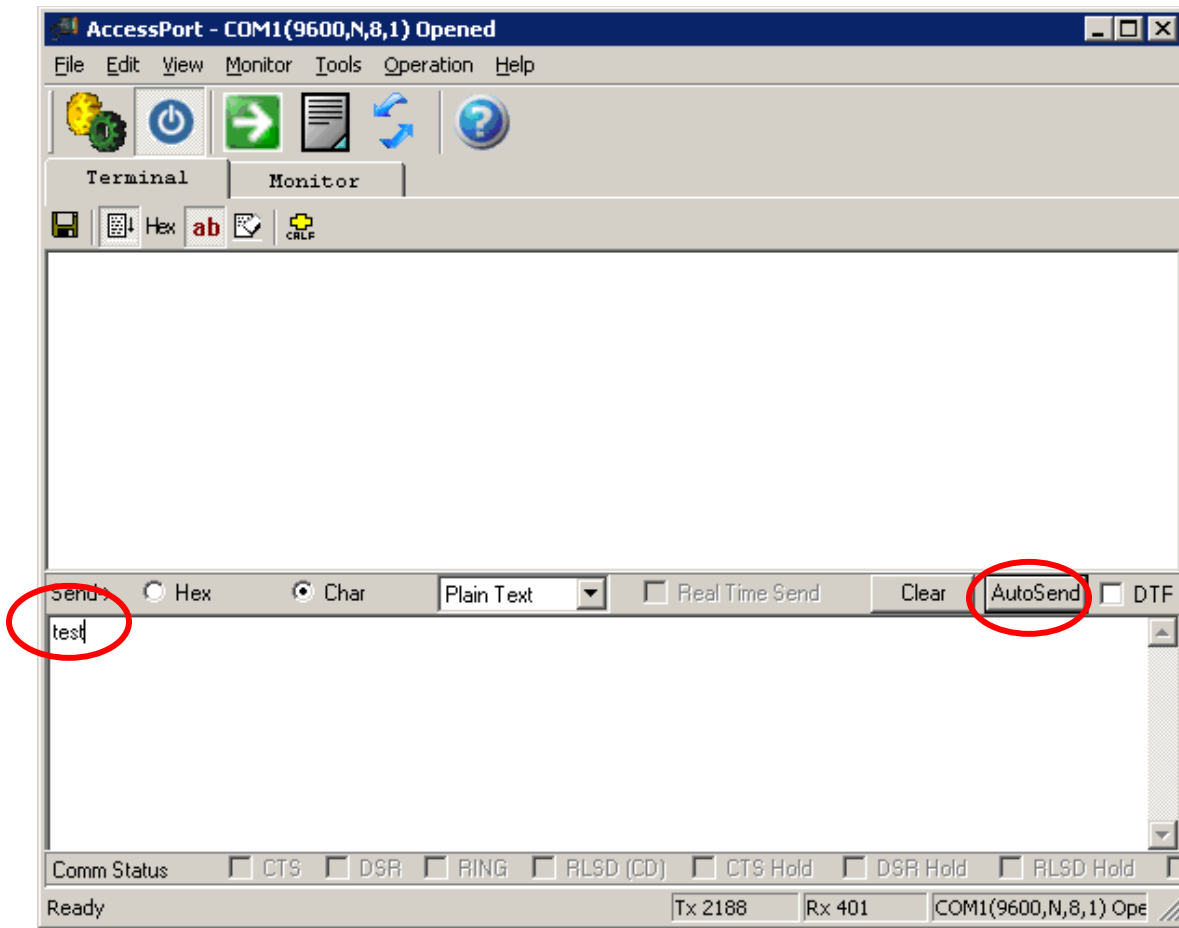


Click OK, this will automatically open the selected COM port if it has been correctly created by the FabulaTech Virtual COM software, and if the HLSE03P is properly connected to your computer.

Once the COM port has been opened by AccesPort the status will show “Connected” in FabulaTech.

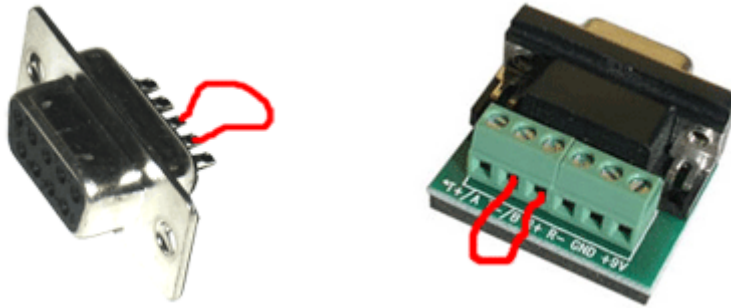


Enter a text string in the lower window and click the AutoSend button:



AccessPort will now start sending the text string to the COM port, the 'Link' and 'Trans' LED lights on the HLSE03P should now start flashing.

To confirm that the HLSE03P can send and receive data you now need to connect the TX pin to the RX pin (pin 3 to pin 2) at the DB9 connector on the HLSE03P. The easiest and safest way to do this is by making a loop-back plug from a female DB9 connector or terminal header such as pictured below:



If you do not have any of these available you can manually make a connection from pin 2 to pin 3 at the HLSE03P's DB9 connector by carefully using a piece of wire or even a paper clip to short the pins. Be careful not to short any other pins since this might damage the adapter.

