

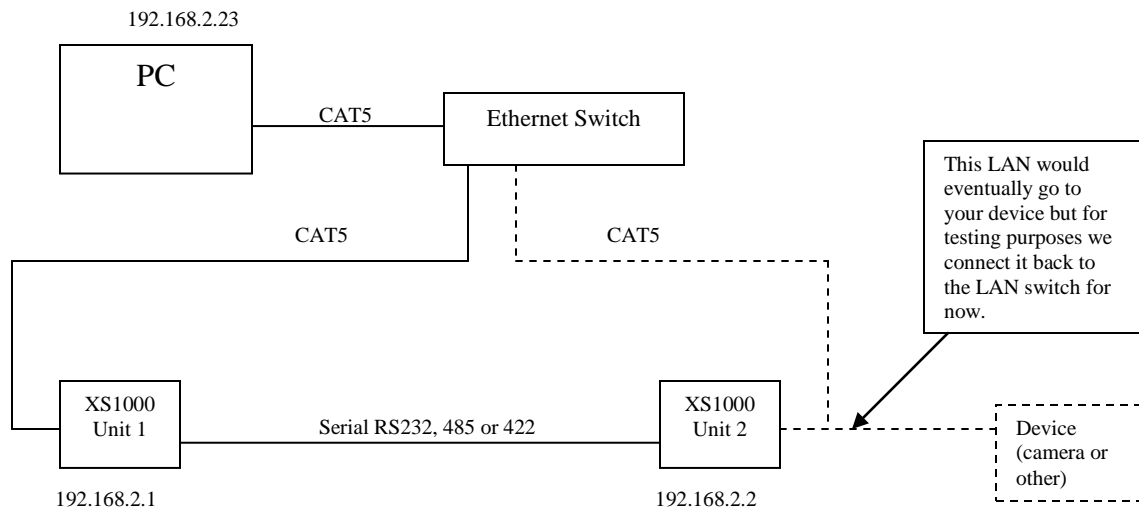
# Tunneling Mode over Serial

for XS1000/BF430

This guide describes how to setup and test communication between two serial device servers over the serial RS232/422/485 link.

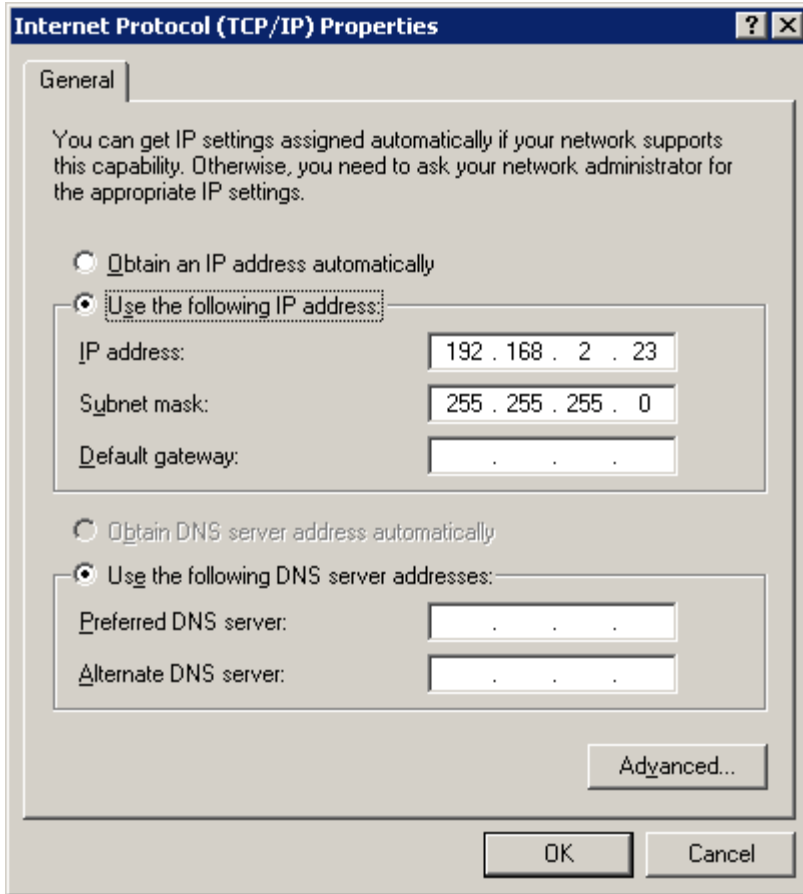
This guide is based on the XS1000 serial device server with Windows XP.

The devices should be setup as following:

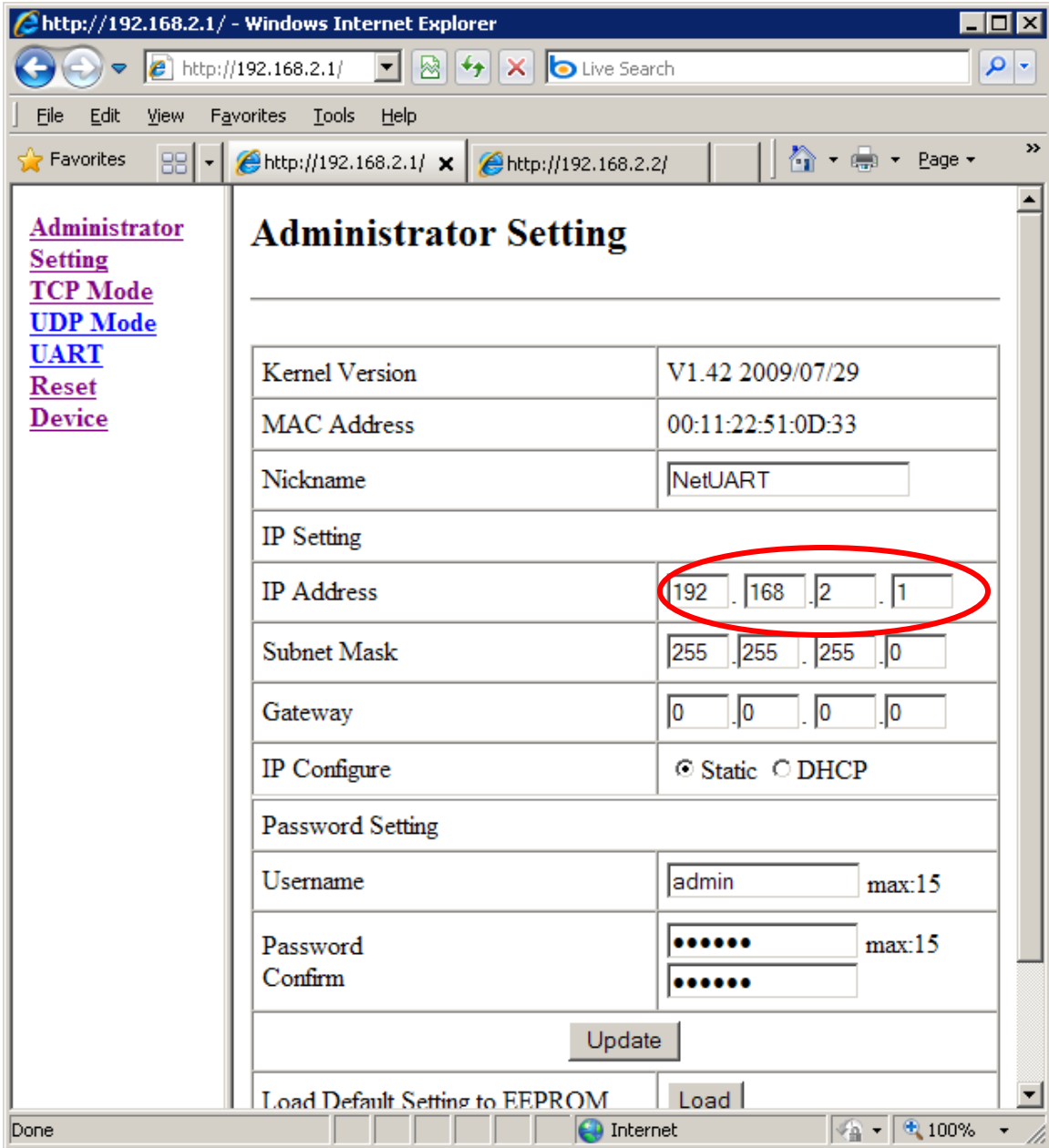


If RS232, connect: Tx on unit 1 to Rx on unit 2  
 Rx on unit 1 to Tx on unit 2  
 If RS485, connect: D+ on unit 1 to D+ on unit 2  
 D- on unit 1 to D- on unit 2  
 If RS422, connect: Tx- on unit 1 to Rx- on unit 2  
 Rx- on unit 1 to Tx- on unit 2  
 Tx+ on unit 1 to Rx+ on unit 2  
 Rx+ on unit 1 to Tx+ on unit 2

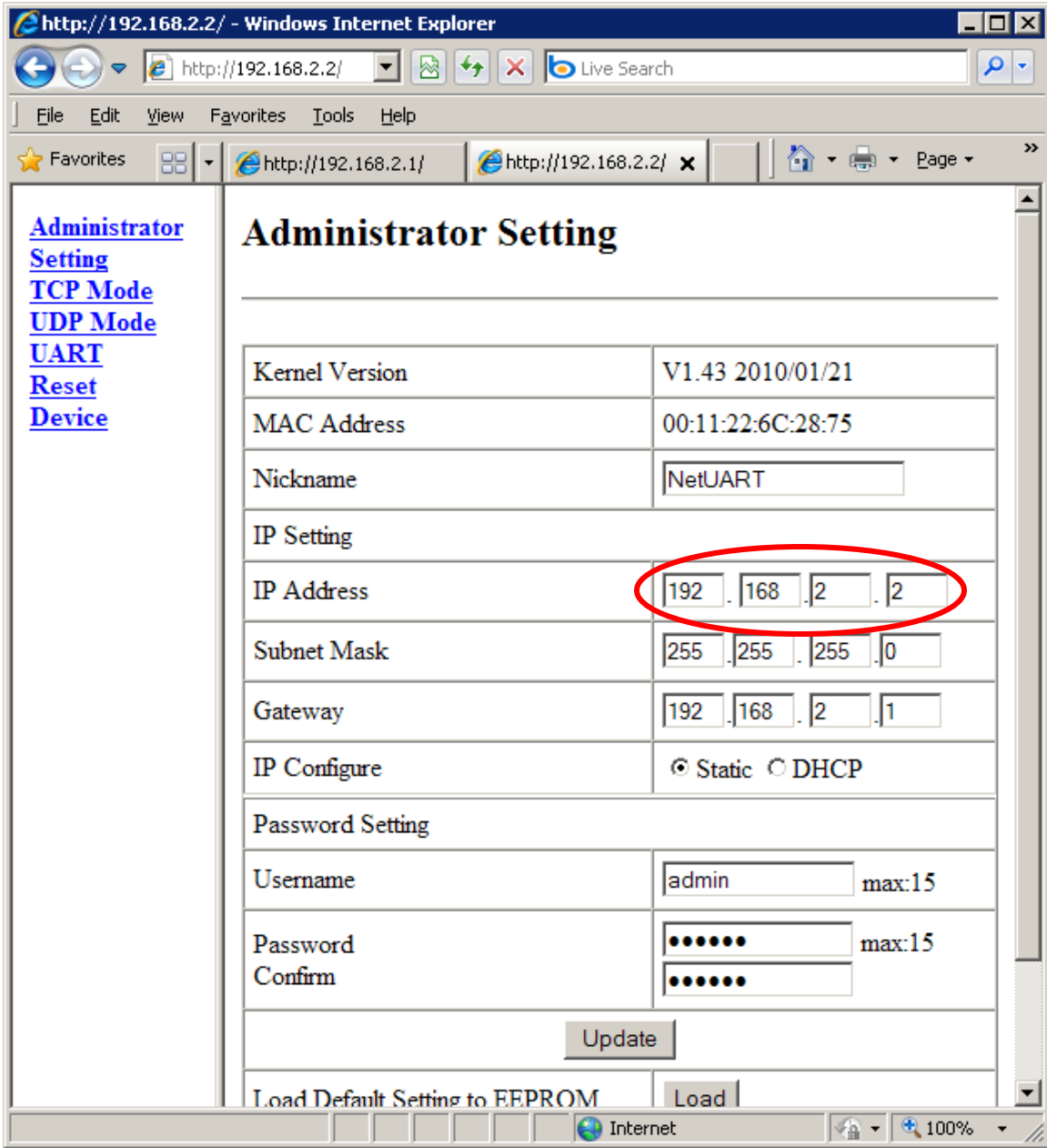
Set the static IP address of your computer. In this example we use 192.168.2.23.



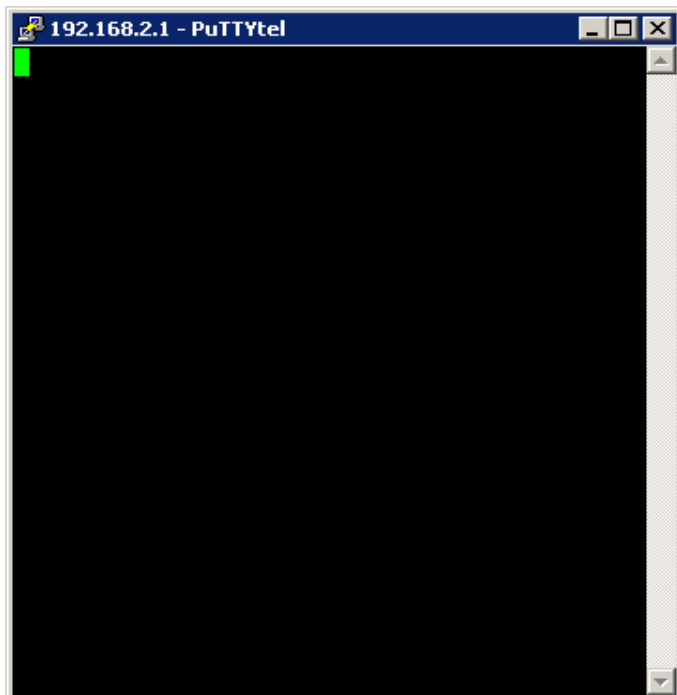
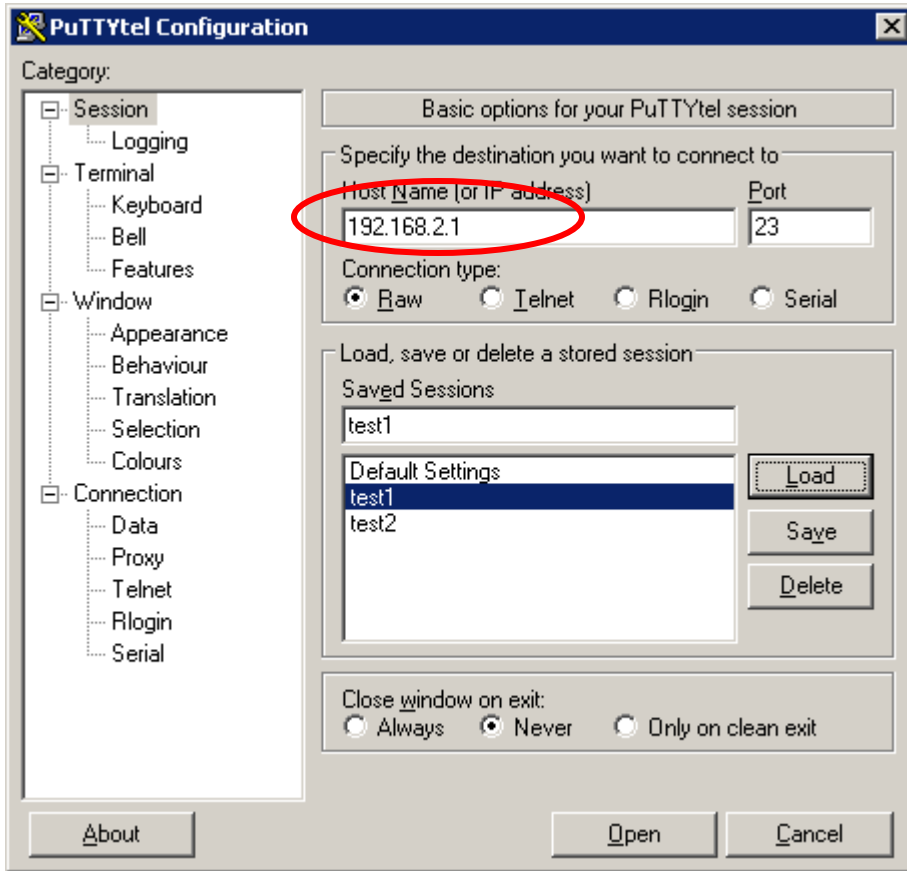
Log in to the XS1000 unit 1 and check the IP address is 192.168.2.1. (this is the default).



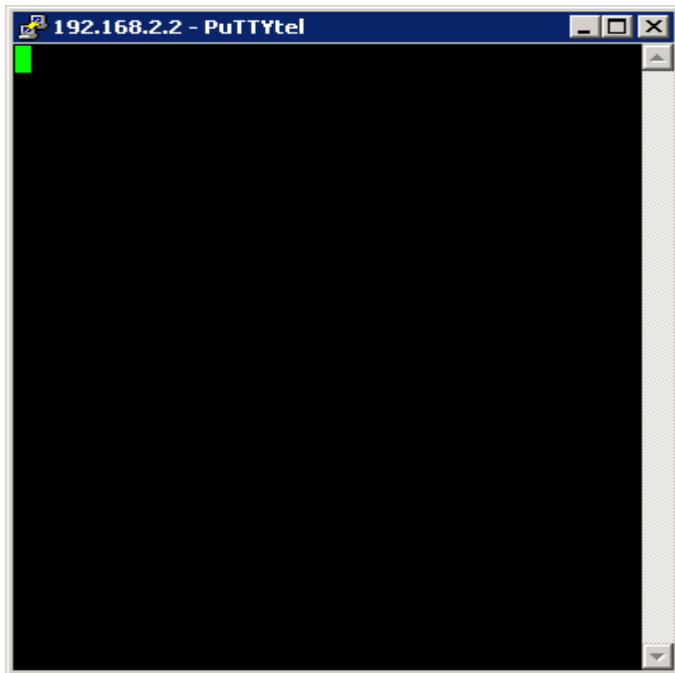
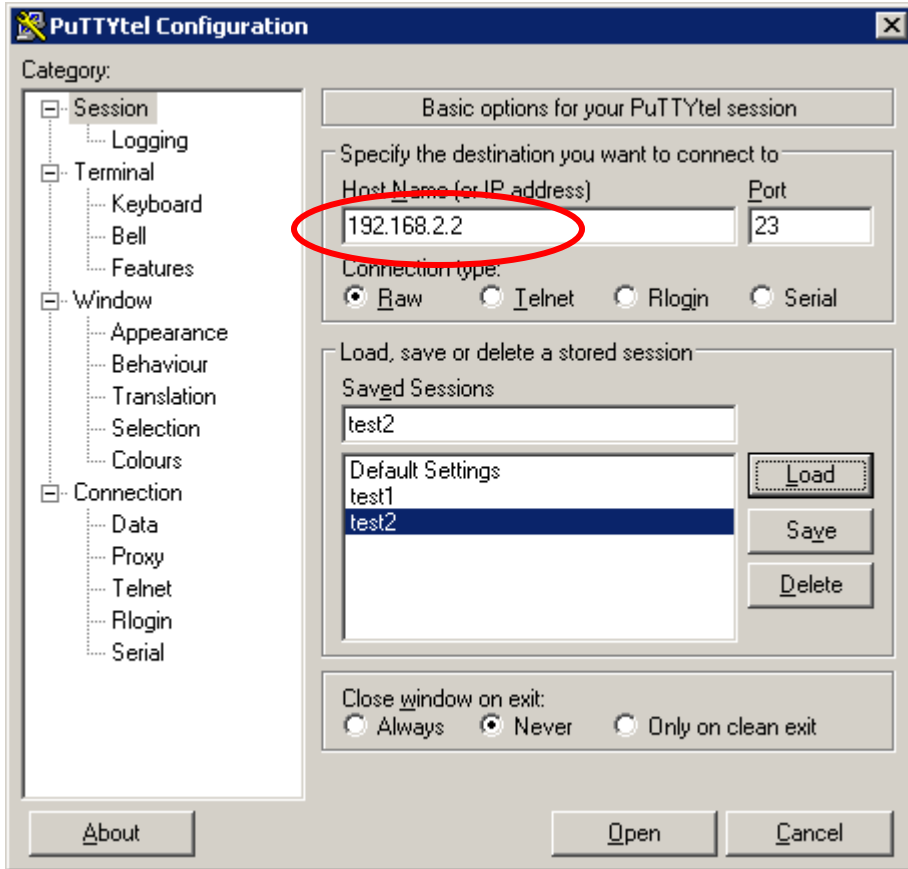
Log in to XS1000 unit 2 and set the IP address to 192.168.2.2.



Start Putty (can be downloaded from [www.Nordfield.com](http://www.Nordfield.com)) and open a connection to each XS1000. Here are the settings for unit 1:



Here are the settings for unit 2:



With the two sessions open, one for each XS1000, you can now send data back and forth between the two units over the serial connection via LAN.

