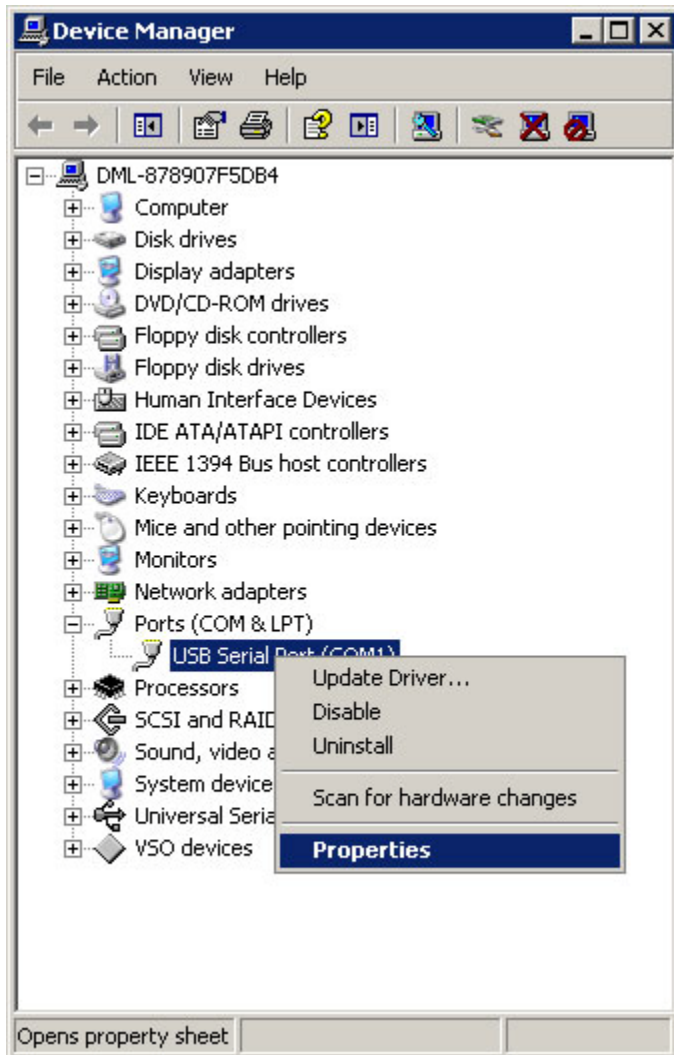
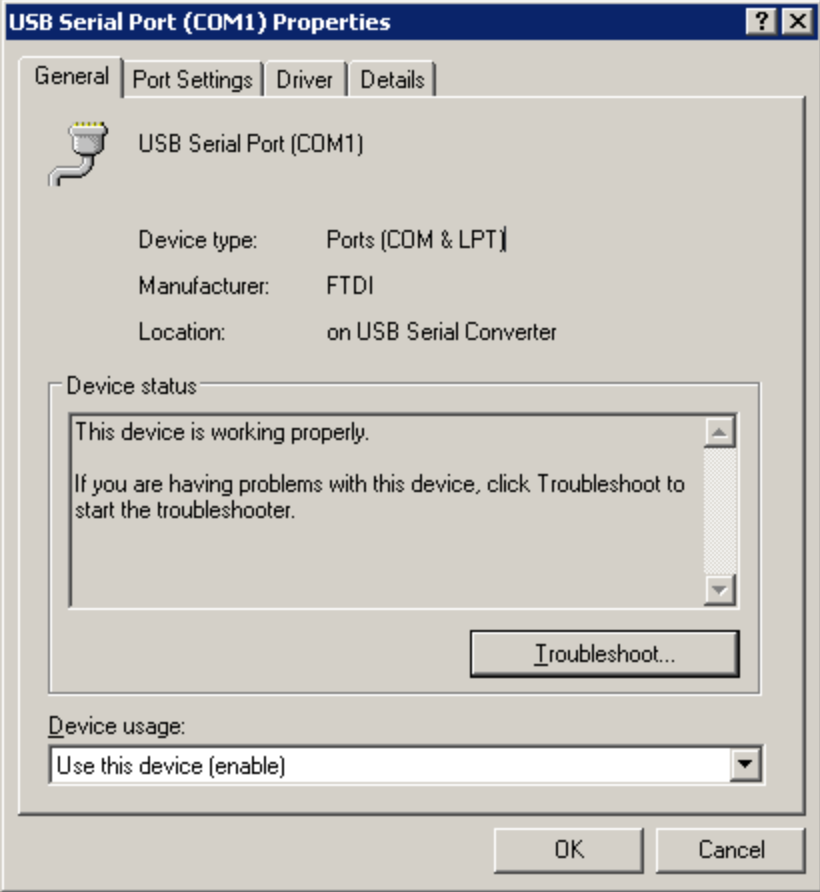
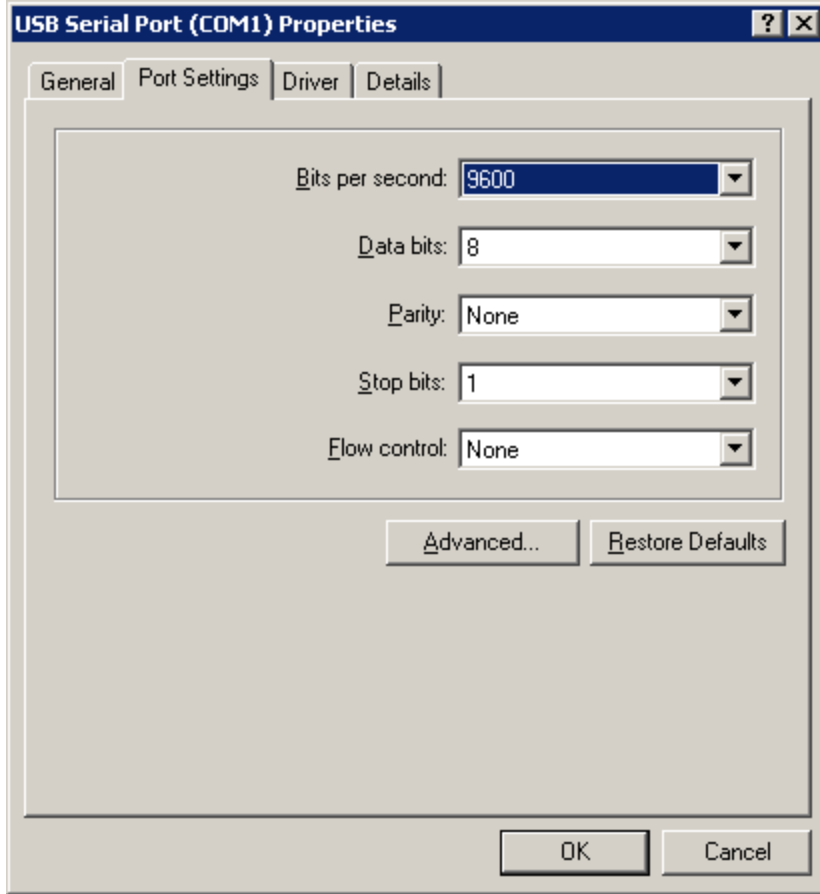


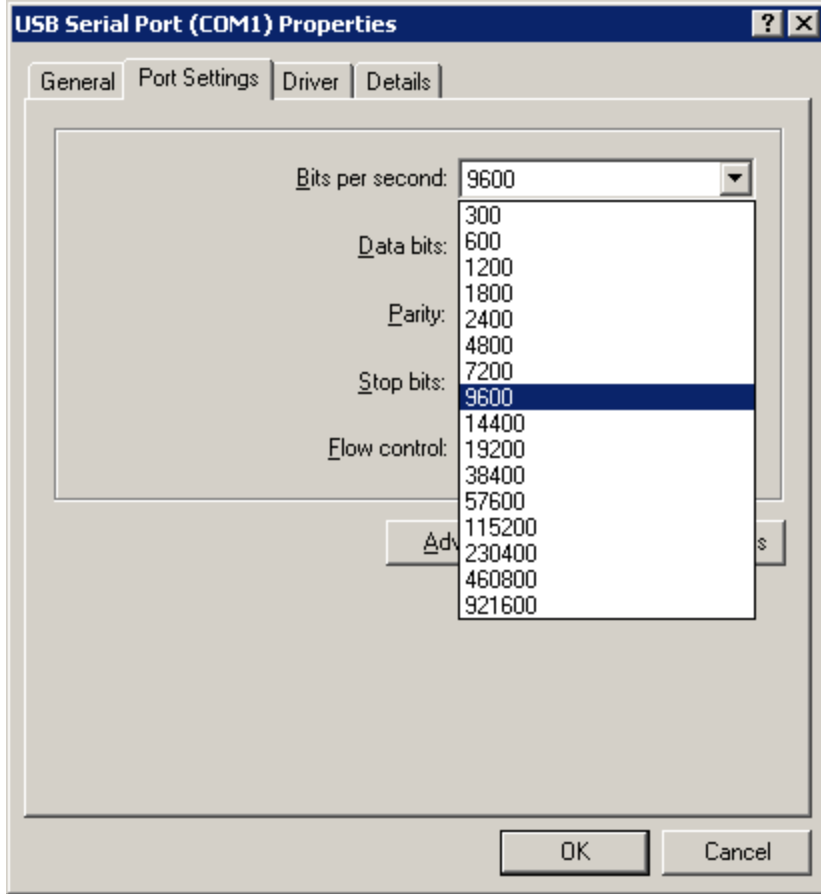
FTDI default driver settings

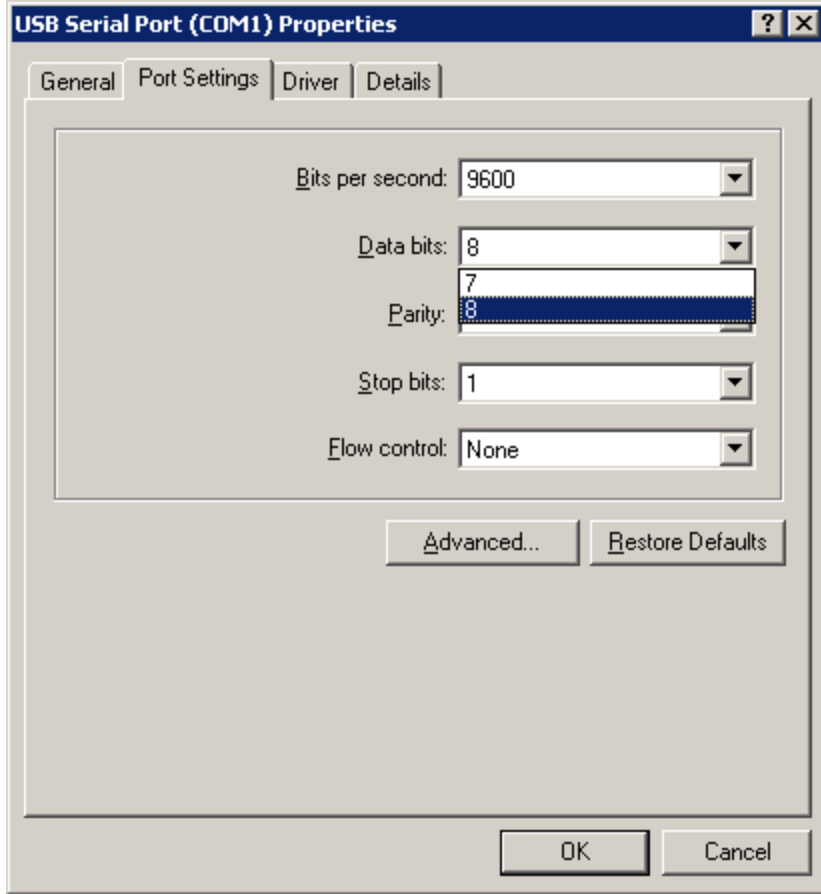
In Windows Device Manager right click on the created COM port and chose Properties

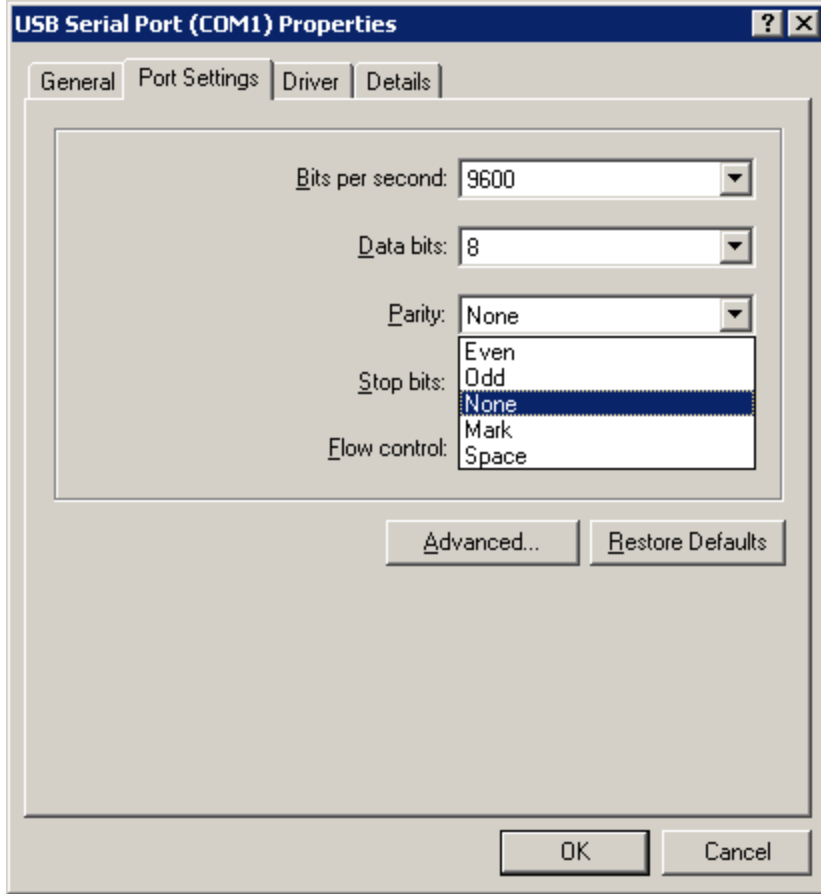


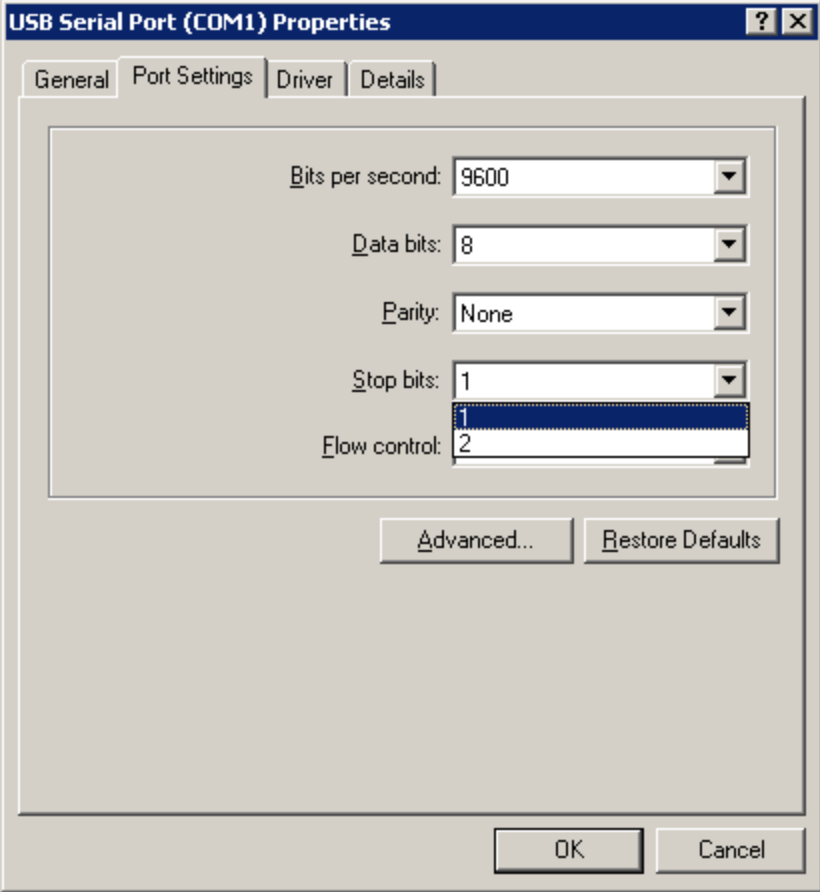


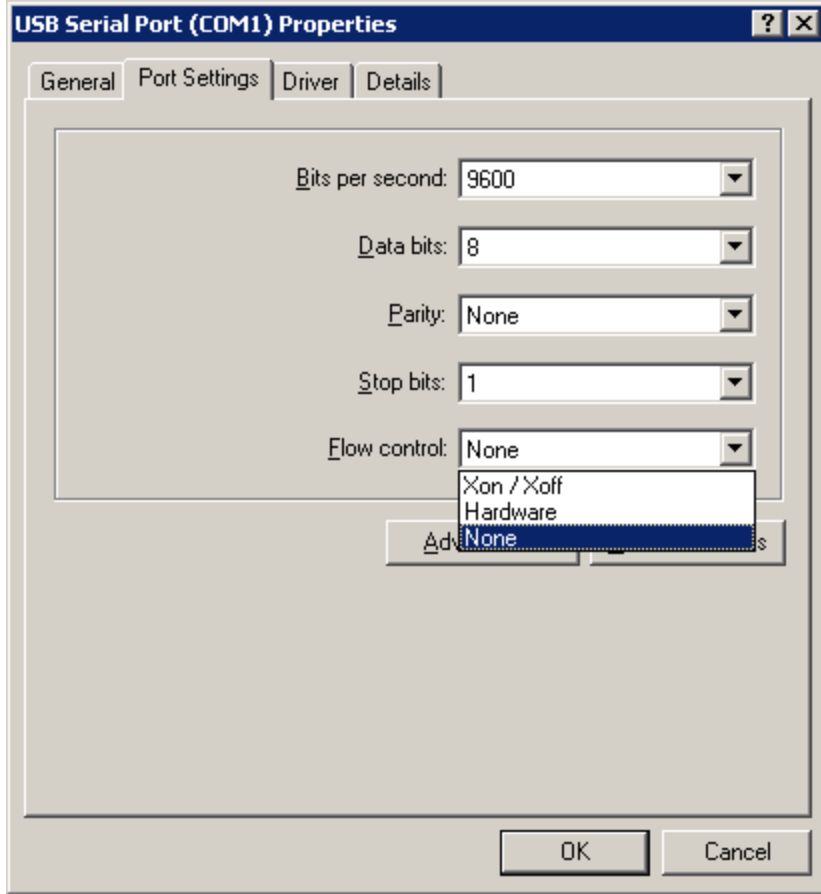




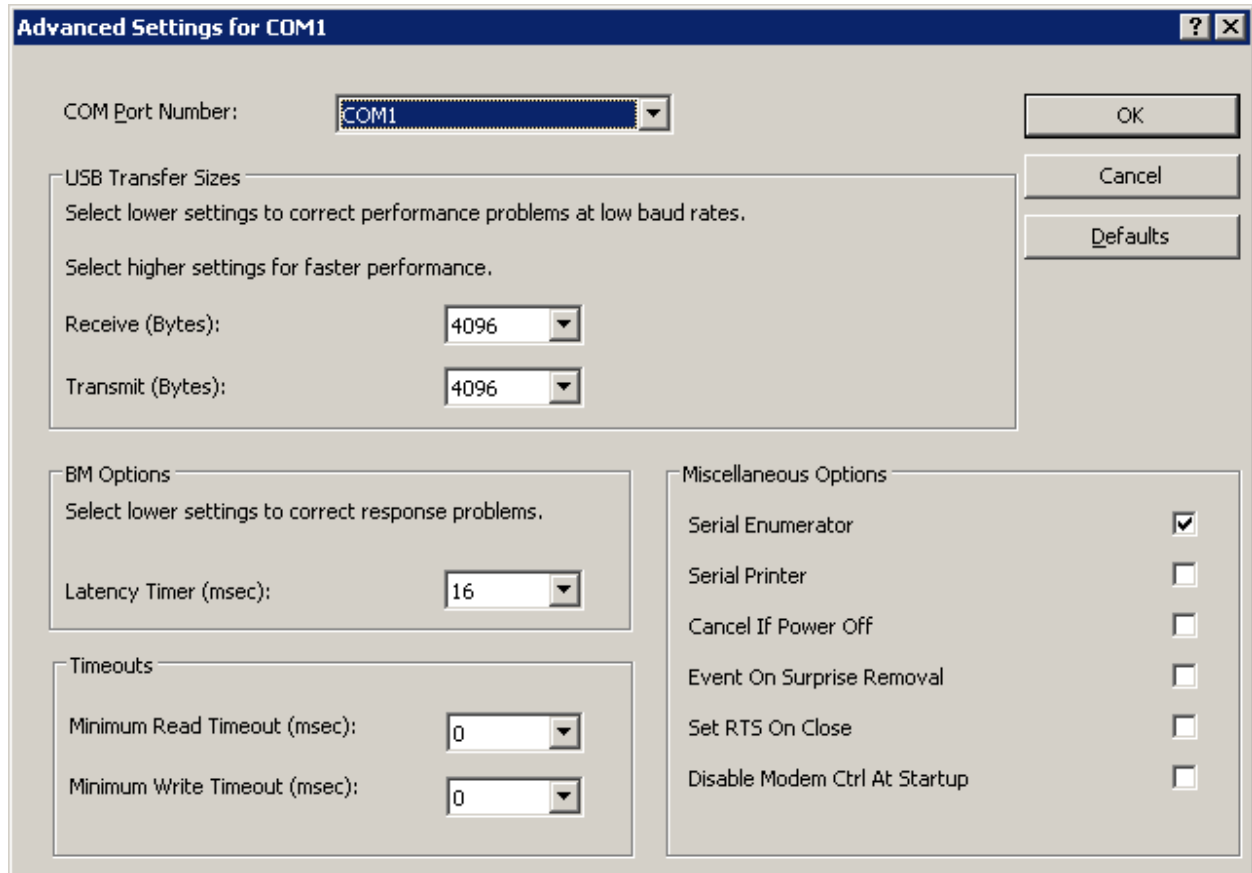








By clicking the Advanced button under the Port Settings tab you get the Advanced settings screen:



COM port number: COM1 to COM256

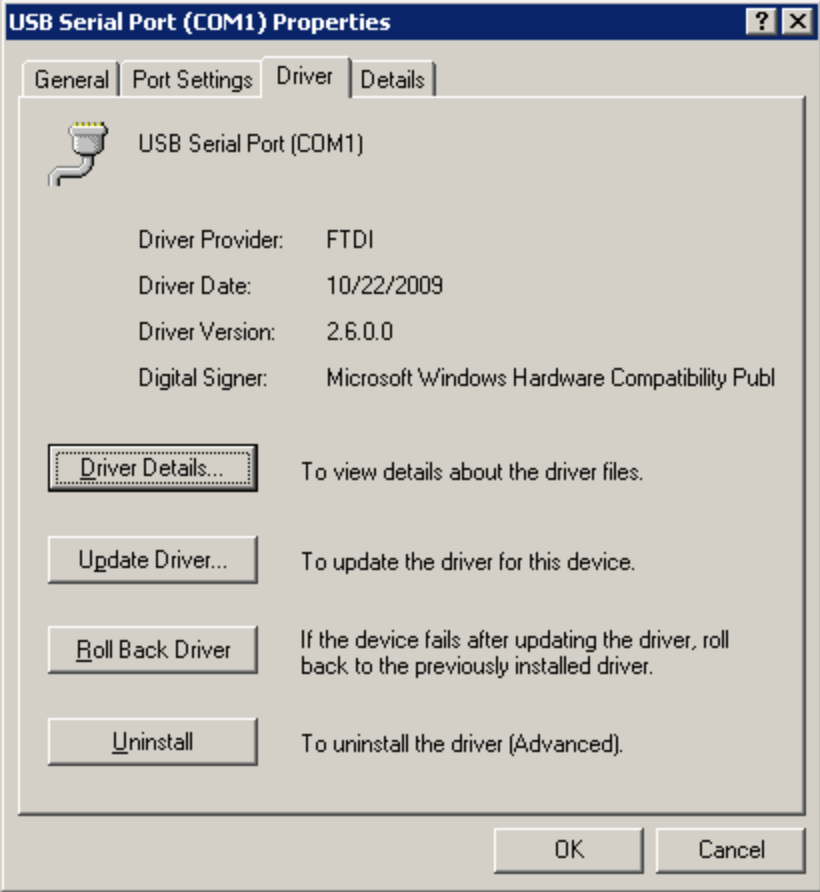
Receive (Bytes): 64 to 4096

Transmit (Bytes): 64 to 4096

Latency timer (msec): 1 to 255

Minimum Read Timeout (msec): 0 to 10000

Minimum Write Timeout (msec): 0 to 10000



Driver Details button under Drivers Tab:

