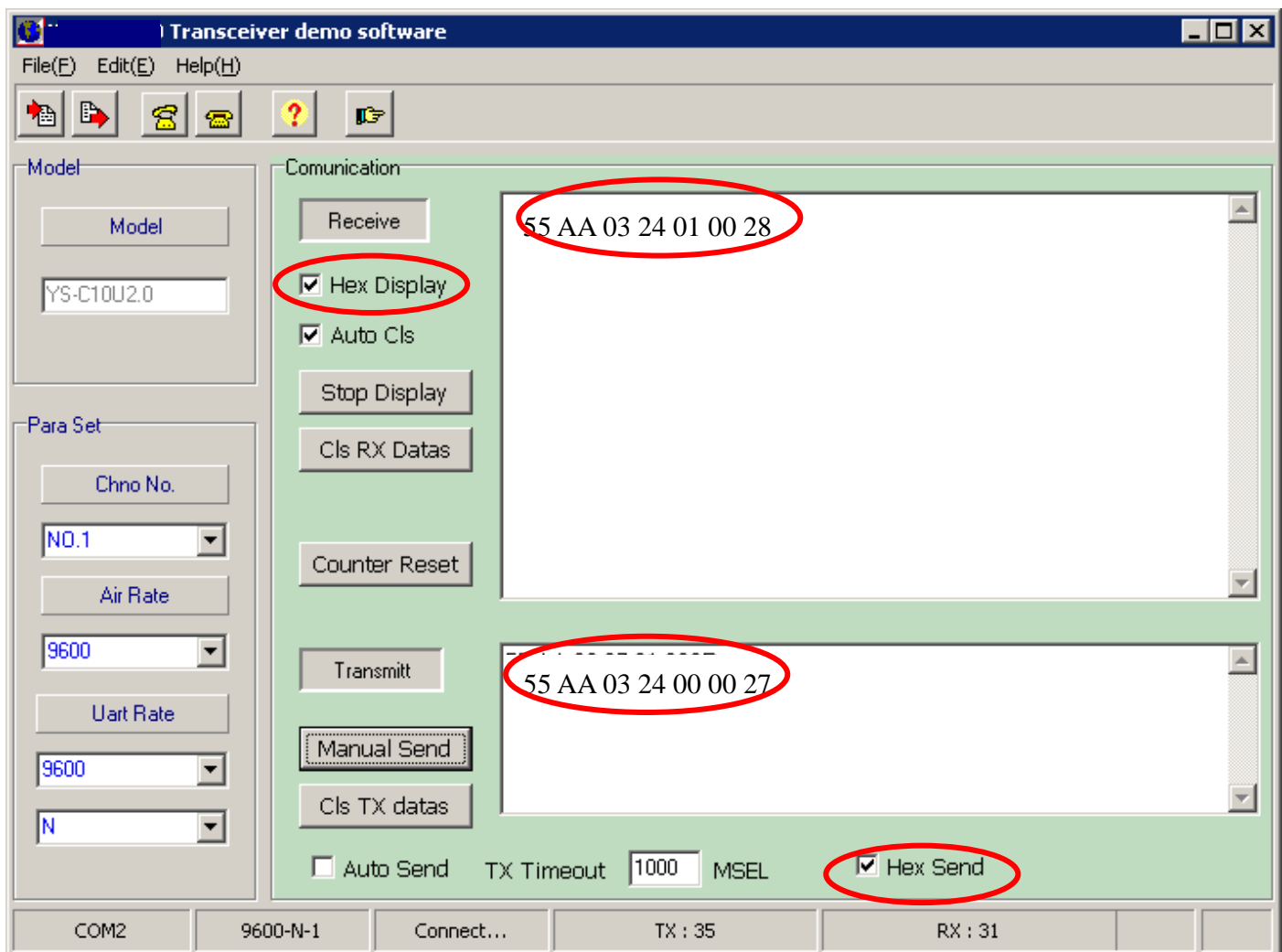


YS-C30 RF module Configuration

Changing parameters by HEX codes

Instead of using the included configuration tool you can use any COM port software for configuring the wireless unit. The main requirement for the terminal software is that it must be able to send HEX codes, and if you want to be able to read what is received then the software should also be able to receive HEX codes. (Hyper Terminal cannot be used since this only sends ASCII characters).

Below is an example of reading the channel number the Configuration Utility. By entering the HEX code 55 AA 03 24 00 00 27 in the 'Transmit' window and clicking the button 'Manual Send' the command will be sent to the wireless module and you can read the response in the upper 'Receive' window. Make sure that the 'Hex Display' checkbox for both windows are checked.



Parameter overview

1. Channel change

55 AA 03 07 XX 00 (0A+XX)

Correct return:

55 AA 02 20 00 22

Error return:

55 AA 02 21 00 23

Such as switch to channel 1

55 AA 03 07 01 00 0B (0A+01)

*XX show the channel number

2. Change Baud rate

55 AA 03 28 YX (chksun=03+28+YX 2 bytes ,high byte first)

Y show parity bit : 3 even parity 0 no parity 2 odd parity

X show baud rate:

19200 :0

9600:1

4800:2

2400:3

1200:4

Correct return:

55 AA 02 20 00 22

Error return:

55 AA 02 21 00 23

Such as 1200 even parity: 55 AA 03 28 34 00 5F

3. Read channel

55 AA 03 24 00 00 27

Correct return:

55 AA 03 24 XX 00 (27+XX)

Such as current channel is 1:

55 AA 03 24 01 00 28(27+01)

* XX show channel number

4. Set address

55 AA 05 32 XX YY ZZ CHK (CHK=05+32+XX+YY+ZZ 2 bytes ,high byte first)

Correct return:

55 AA 02 20 00 22

Error return:

55 AA 02 21 00 23

5. Read address

55 AA 03 26 00 00 29

Correct return:

55 AA 05 26 XX YY ZZ (05+26+XX+YY+ZZ)

Such as the current address is 000001:

55 AA 05 26 00 00 01 00 2C(05+26+01)